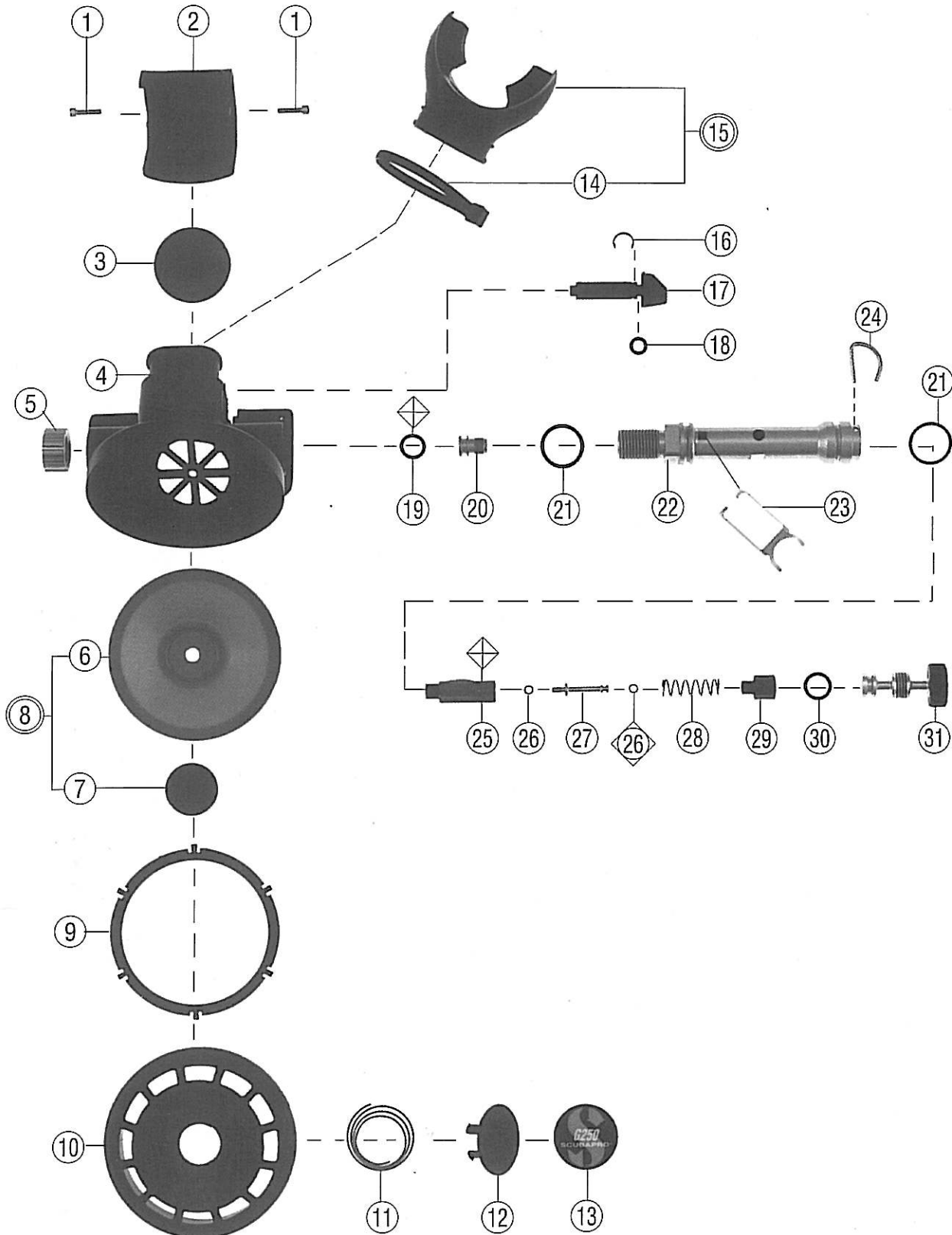


SCUBAPRO

Technical Service Schematic

G250 SECOND STAGE #11-25X-000

Date 12/97 Revision D
Annual Repair Parts Kit #11-254-041



SCUBAPRO

Technical Service Schematic

G250 SECOND STAGE #11-25X-000

Date 12/97

Revision E

Annual Repair Parts Kit #11-254-041

Parts

#	QTY	PART #	DESCRIPTION	COST
1	1	01-101-128	SCREW, CAP, SOCKETHEAD	
2	1	11-250-023	COVER, EXHAUST	
3	1	11-250-103	VALVE, EXHAUST	
4	1	11-250-200	CASE, MOLDED	
5	1	11-250-106	NUT, JAM	
6	1	11-109-124	DIAPHRAGM, BLACK	
7	1	11-109-123	DISC, DIAPHRAGM	
8	1	11-109-011	DIAPHRAGM ASSY	
9	1	11-190-117	SPACER RING	
10	1	11-250-201	COVER, FRONT	
11	1	01-020-110	SPRING, PURGE	
12	1	11-250-110	PURGE	
	1	01-006-036	DECAL, G250, BLUE	
	1	01-006-446	DECAL, G250, PINK	
▲	1	01-088-101	MOUTHPIECE STRAP, BLACK	
	1	01-088-107	MOUTHPIECE STRAP, CRYSTAL	
▲	1	01-040-010	MOUTHPIECE, BLACK	
	1	01-040-006	MOUTHPIECE, CRYSTAL	
*	1	01-073-250	RETAINING RING, FLOW VANE, COPPER	
17	1	11-250-204	FLOW VANE	
18	1	01-050-126	O-RING, FLOW VANE, RED	
19	1	01-050-293	O-RING, ORIFICE	
*	1	11-109-109	ORIFICE	
21	2	01-050-160	O-RING, INLET TUBE, RED	
22	1	11-250-102	INLET TUBE	
23	1	11-109-105	LEVER	
24	1	11-109-121	RETAINING PIN	
25	1	11-150-003	POPPET ASSY, BALANCED	
26	1	01-050-399	O-RING, POPPET STEM, BLACK	
27	1	11-150-103	STEM, POPPET	
28	1	01-020-216	SPRING, BALANCED POPPET	
29	1	11-150-102	BALANCED CHAMBER	
30	1	01-050-138	O-RING, ADJUSTMENT KNOB, BLUE	
*	1	11-250-009	KNOB, ADJUSTMENT	

Technical Information:

The Annual Repair Parts Kit may contain o-rings used in the hose assembly. Refer to the separate hose schematic for identification.

Reference Item #6: The molded part number imprinted on the rubber diaphragm is 11-109-124.

Special Engineering Notes:

Prior to installing the poppet, the orifice item #20 should be backed away from the poppet to avoid damage to the poppet seat.

To install the poppet, install the lever first into the slotted holes of the inlet Item #22. With the housing in the case, hold the housing upright and drop the poppet into the housing so the tabs that project from the poppet are facing towards the mouthpiece. These tabs must engage into the legs of the lever to lift the poppet when the lever is depressed.

The flow vane retaining ring Item #16 has been changed from stainless to copper alloy. The stainless clips should be inspected annually for rust and replaced with the copper clip if rusted.

Lubricate all threads with silicone grease, especially those of the adjustment knob Item #31 to reduce long term corrosion and provide easier disassembly at the next service interval.

Legend (prices subject to change without notice)

- Not Shown ◊ Dynamic O'Ring Replace Annually
- Optional Item ◈ Annual Replacement
- ▲ Limited Warranty [] Torque In Inch Pounds
- Older Configuration * See Note